

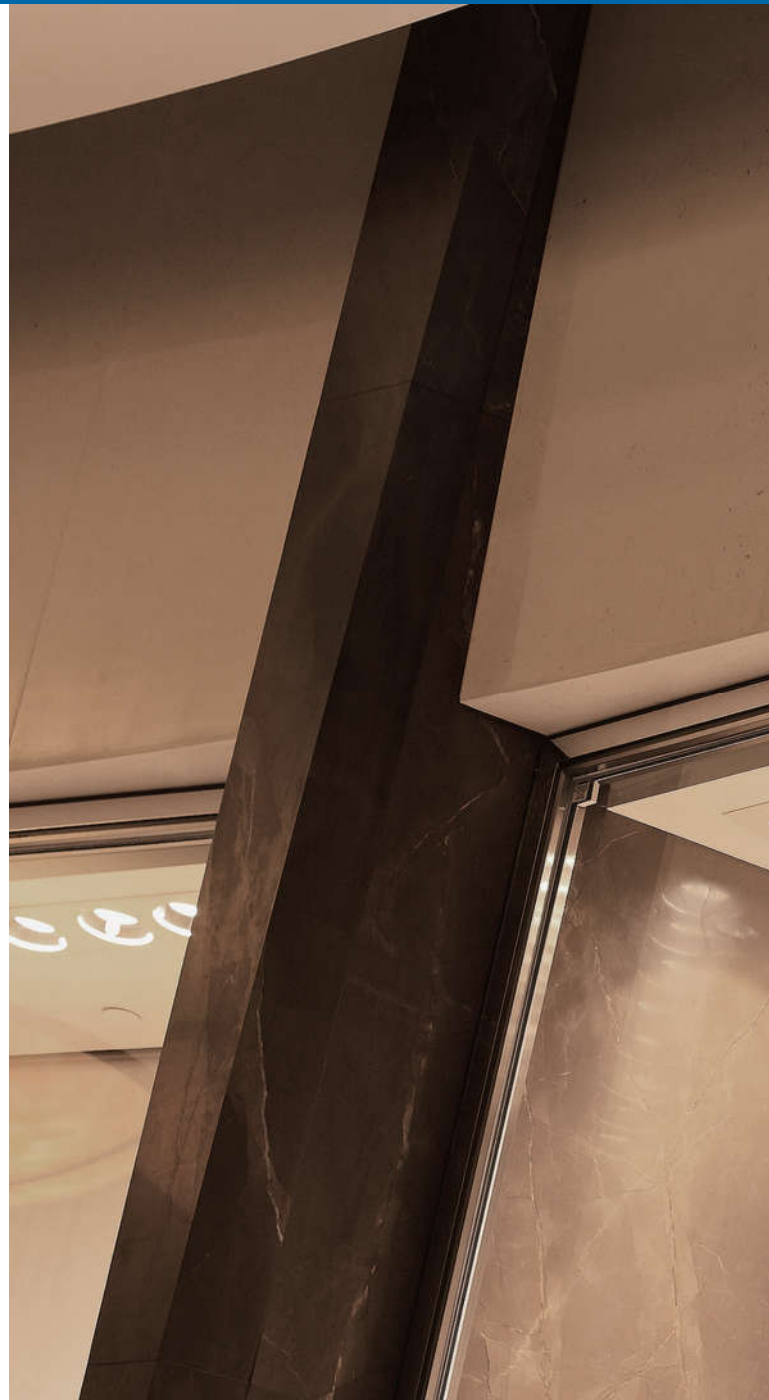


Saturn Series

Waterproof

FORWARD PAR light is designed with aluminum fins, optimizing heat dissipation and increasing lamp life time. Jupiter Series provides high luminous efficiency and reduce re-lamp frequency. PAR lights in this series are water-proofed (IP 66 rating) and available in dimmable function. It is suitable for outside application such as advertising signs, parks and gardens.

福華電子PAR燈的設計與鋁鱗片，提供優化的散熱功能以及增加燈泡的壽命時間。PAR燈提供了高發光效率，也達到IP 66等級，可用於室外廣告看板、庭園與公園等照明。



OUTDOOR LIGHTING



▶ PAR38

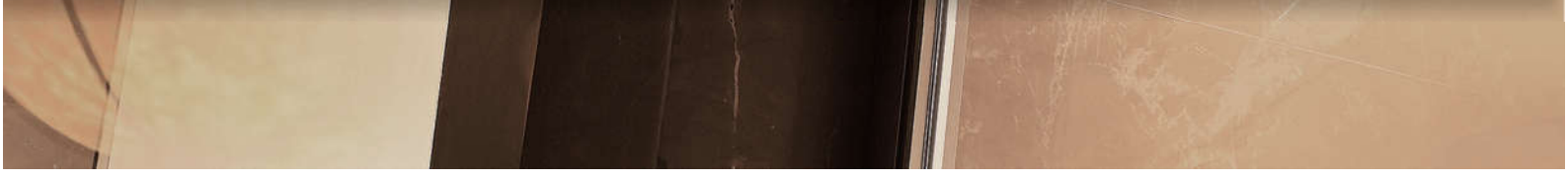


▶ SL-P52-A0-U42WXX



▶ SL-P38X2-U-20-XX-XX







WATERPROOF PAR LIGHT



Feature

- Available in 9W, 15, 20, 39~42W
- Available in dimmable & non-dimmable PAR light
- The elegant design provides increased life when compared to less-efficient incandescent
- Creates a cool, energetic environment for your work and living spaces.
- The spot light is ideal providing a bright, white light that is perfect for general lighting.

Benefits

- Environmentally friendly-reduced CO₂ production and power consumption
- Easy installation- direct replacement with E26/E27 base
- No UV/IR irradiation
- Lead- free, Mercury- free
- PAR 38 save up to 85%energy saving than traditional 120W halogen PAR lamps

Application

- Patio wall lighting, floodlighting, advertising signs, buildings, statues, podiums, sports grounds, parks and gardens



SL-P52-A0-U42WXX



SL-P38X2-U-20-XX-XX

Unit:mm

Model Name 型號	Wattage 瓦數	Input Voltage 輸入電流	Color Designation 光色	Luminous Flux(lm) 光通量 (流明)	Luminous Efficiency (lm/W) 發光效率	CRI 演色性	Dimming 調光	Authenticate 安規&認證
PR4x*y*-C15A02	15W	AC 100~240 V	Cool White	900 lm	60	70	NO	CE (PS) (UL)
PR4x*y*-W15A02	15W	AC 100~240 V	Warm White	800 lm	53	80	NO	CE (PS) (UL)
PR4x*y*-C15A03	15W	AC 100~240 V	Cool White	950 lm	63	75	NO	CE (PS) (UL)
PR4x*y*-W15A03	15W	AC 100~240 V	Warm White	850 lm	57	85	NO	CE (PS) (UL)
PR4x*y*-C20A02	20W	AC 100~240 V	Cool White	1200 lm	60	70	NO	CE (PS) (UL)
PR4x*y*-W20A02	20W	AC 100~240 V	Warm White	1000 lm	50	80	NO	CE (PS) (UL)
PR4x*y*-C20A03	20W	AC 100~240 V	Cool White	1300 lm	65	75	NO	CE (PS) (UL)
PR4x*y*-W20A03	20W	AC 100~240 V	Warm White	1100 lm	55	85	NO	CE (PS) (UL)
PR4x*y*-C20A02DVz*	20W	AC 100~120 / 200~240 V	Cool White	1200 lm	60	70	YES	CE (PS) (UL)
PR4x*y*-W20A02DVz*	20W	AC 100~120 / 200~240 V	Warm White	1000 lm	50	80	YES	CE (PS) (UL)
PR4x*y*-C20A03DVz*	20W	AC 100~120 / 200~240 V	Cool White	1300 lm	65	75	YES	CE (PS) (UL)
PR4x*y*-W20A03DVz*	20W	AC 100~120 / 200~240 V	Warm White	1100 lm	55	85	YES	CE (PS) (UL)

x*(Base 基座) : 0=E26 / 1=E27

y*(Beam Angle 發光角度) : 0=100° / 1=15° / 2=25° / 4=45°

z*(Input Voltage 輸入電壓) : 1=AC100~120V / 2=AC 200~240V

Model Name 型號	Illumination @1m 1米照度
PR4x*1-C15A02	5300
PR4x*2-C15A02	3220
PR4x*4-C15A02	1180
PR4x*1-W15A02	4710
PR4x*2-W15A02	2860
PR4x*4-W15A02	1050
PR4x*1-C15A03	5600
PR4x*2-C15A03	3400
PR4x*4-C15A03	1250
PR4x*1-W15A03	4950
PR4x*2-W15A03	3000
PR4x*4-W15A03	1100
PR4x*1-C20A02	7070
PR4x*2-C20A02	4300
PR4x*4-C20A02	1580
PR4x*1-W20A02	5900
PR4x*2-W20A02	3580
PR4x*4-W20A02	1315

Model Name 型號	Illumination @1m 1米照度
PR4x*1-C20A03	7660
PR4x*2-C20A03	4650
PR4x*4-C20A03	1710
PR4x*1-W20A03	6480
PR4x*2-W20A03	3940
PR4x*4-W20A03	1440
PR4x*1-C20A02DVz*	7070
PR4x*2-C20A02DVz*	4300
PR4x*4-C20A02DVz*	1580
PR4x*1-W20A02DVz*	5900
PR4x*2-W20A02DVz*	3580
PR4x*4-W20A02DVz*	1315
PR4x*1-C20A03DVz*	7660
PR4x*2-C20A03DVz*	4650
PR4x*4-C20A03DVz*	1710
PR4x*1-W20A03DVz*	6480
PR4x*2-W20A03DVz*	3940
PR4x*4-W20A03DVz*	1440

Model Name 型號	Wattage 瓦數	Input Voltage 輸入電流	Kelvin 色溫	Luminous Flux(lm) 光通量 (流明)	Efficiency 效率	CRI 演色性	Degree 角度	Operating Temperature 使用溫度範圍
SL-P52-A0-U42WXX	39~42W	AC 100~240 V	2700K	3000~3200 lm	87	70	110	-10~35°C
SL-P52-A0-U42WXX	39~42W	AC 100~240 V	5000K	3800~4000 lm	87	70	110	-10~35°C
SL-P52-A0-U42WXX	39~42W	AC 100~240 V	6500K	3800~4000 lm	87	70	110	-10~35°C
SL-P38X2-U-20-XX-XX	20W	AC 100~240 V	2700K	1550 lm	85	70	110	-20~40°C
SL-P38X2-U-20-XX-XX	20W	AC 100~240 V	5000K	1700 lm	85	70	110	-20~40°C
SL-P38X2-U-20-XX-XX	20W	AC 100~240 V	6500K	1800 lm	85	70	110	-20~40°C

1. Lumen tolerance 流明公差值 : ± 10%
2. Beam Angle tolerance 發光角度公差值 : ± 10%
3. Kelvin tolerance 色溫公差值 : ± 10%