

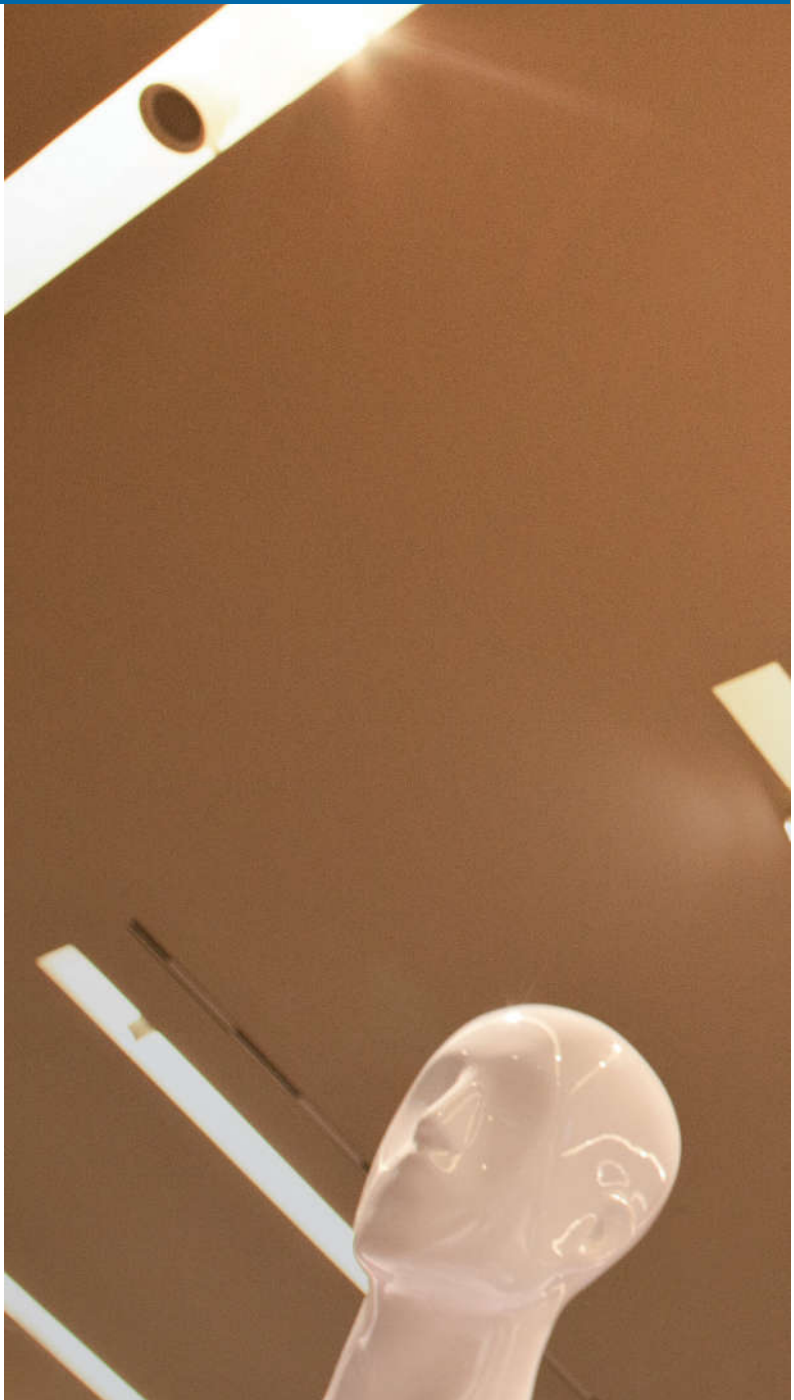


## MarsSeries

**AR111 10W · 12W · 20W**

The Mars Series AR111 delivers energy-saving solution and exceptional light quality. With the design of the aluminum heat sink and highly efficient power supply, our product saves up to 85% of the energy comparing to conventional halogen lamps. The AR111 reflectors are suitable for general lighting purpose and special occasion in various residential & commercial space to create desirable ambience.

福華電子AR111提供節能解決方案和卓越的輕量化品質。高效率的鋁散熱鰭片和高效能的電源，我們的產品跟傳統AR111比較之下，可以節省高達85%的能源。AR111光源適用於一般照明用途和在住宅及特殊場合，創造理想的商業空間氛圍。



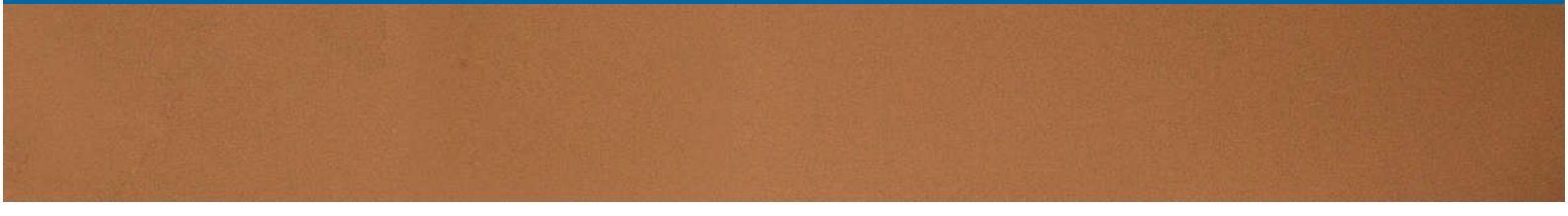
# INDOOR LIGHTING



▶ AR73x\*B  
10W/12W



▶ AR92x\*20W





**AR111**

**Excellent  
Cooling  
System**

**Energy  
Saving**

**No UV / IR  
Irradiation**



**Feature**

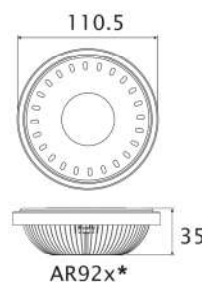
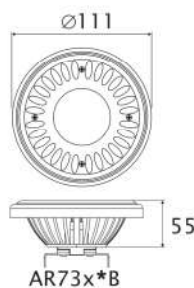
- Available in 10W, 12W, 20W
- Available angle: 15, 25, 40, 45 degrees
- Available in dimmable & non- dimmable spotlight
- In- house optical design with excellent cooling system
- No multi- shadows

**Benefits**

- Environmentally friendly – reduced CO<sub>2</sub> production and power consumption
- No UV/IR irradiation
- Lead- free, Mercury- free
- Up to 85%energy saving than traditional halogen AR111 reflectors

**Application**

- Retail shops, bars & restaurants, hotels, residential spaces, art gallery, museum, hospitals, universities



Unit:mm

Model Name 型號	Wattage 瓦數	Input Voltage 輸入電流	Color Designation 光色	Luminous Flux(lm) 光通量 (流明)	Luminous Efficiency (lm/W) 發光效率	CRI 演色性	Dimming 調光	Authenticate 安規&認證
AR73x*B-C10y*02	10W	AC 12 V	Cool White	700 lm	70	70	NO	CE
AR73x*B-W10y*02	10W	AC 12 V	Warm White	600 lm	60	80	NO	CE
AR73x*B-C10y*03	10W	AC 12 V	Cool White	750 lm	75	75	NO	CE
AR73x*B-W10y*03	10W	AC 12 V	Warm White	650 lm	65	85	NO	CE
AR73x*B-C10y*B02	10W	AC 100~240 V	Cool White	700 lm	70	70	NO	CE
AR73x*B-W10y*B02	10W	AC 100~240 V	Warm White	600 lm	60	80	NO	CE
AR73x*B-C10y*B03	10W	AC 100~240 V	Cool White	750 lm	75	75	NO	CE
AR73x*B-W10y*B03	10W	AC 100~240 V	Warm White	650 lm	65	85	NO	CE
AR73x*B-C12y*02	12W	AC 12 V	Cool White	800 lm	67	70	NO	CE
AR73x*B-W12y*02	12W	AC 12 V	Warm White	700 lm	58	80	NO	CE
AR73x*B-C12y*03	12W	AC 12 V	Cool White	850 lm	71	75	NO	CE
AR73x*B-W12y*03	12W	AC 12 V	Warm White	750 lm	63	85	NO	CE
AR73x*B-C12y*B02	12W	AC 100~240 V	Cool White	800 lm	67	70	NO	CE
AR73x*B-W12y*B02	12W	AC 100~240 V	Warm White	700 lm	58	80	NO	CE
AR73x*B-C12y*B03	12W	AC 100~240 V	Cool White	850 lm	71	75	NO	CE
AR73x*B-W12y*B03	12W	AC 100~240 V	Warm White	750 lm	63	85	NO	CE
AR73x*B-C12y*02DVz*	12W	AC 100~120 V/ 200~240 V	Cool White	800 lm	67	70	YES	CE
AR73x*B-W12y*02DVz*	12W	AC 100~120 V/ 200~240 V	Warm White	700 lm	58	80	YES	CE
AR73x*B-C12y*03DVz*	12W	AC 100~120 V/ 200~240 V	Cool White	850 lm	71	75	YES	CE
AR73x*B-W12y*03DVz*	12W	AC 100~120 V/ 200~240 V	Warm White	750 lm	63	85	YES	CE

x\*(Beam Angle 發光角度) : 1=15° / 2=25° / 3=35°

y\*(Appearance Color 外觀顏色) : A=Gray / B=Black

z\*(Input Voltage 輸入電壓) : 1=AC 100~120V / 2=AC 200~240V

Model Name 型號	Wattage 瓦數	Input Voltage 輸入電流	Color Designation 光色	Luminous Flux(lm) 光通量 (流明)	Luminous Efficiency (lm/W) 發光效率	CRI 演色性	Dimming 調光	Authenticate 安規&認證
AR92x*-C20y*02	20W	AC 100~240 V	Cool White	1200 lm	60	70	NO	CE
AR92x*-W20y*02	20W	AC 100~240 V	Warm White	1000 lm	50	80	NO	CE
AR92x*-C20y*03	20W	AC 100~240 V	Cool White	1300 lm	65	75	NO	CE
AR92x*-W20y*03	20W	AC 100~240 V	Warm White	1100 lm	55	85	NO	CE
AR92x*-C20y*02DVz*	20W	AC 100~120 V/ 200~240 V	Cool White	1200 lm	60	70	YES	CE
AR92x*-W20y*02DVz*	20W	AC 100~120 V/ 200~240 V	Warm White	1000 lm	50	80	YES	CE

x\*(Beam Angle 發光角度) : 1=15° / 2=25° / 4=45°

y\*(Appearance Color 外觀顏色) : A=Silver B=Black

**AR111 1米照度參照表**

Model Name 型號	Illumination @1m 1米照度
AR731B-C10y*02	5200
AR732B-C10y*02	2600
AR733B-C10y*02	2200
AR731B-W10y*02	4000
AR732B-W10y*02	2100
AR733B-W10y*02	1800
AR731B-C10y*03	5570
AR732B-C10y*03	2780
AR733B-C10y*03	2360
AR731B-W10y*03	4830
AR732B-W10y*03	2410
AR733B-W10y*03	2040
AR731B-C10y*B02	5200
AR732B-C10y*B02	2600
AR733B-C10y*B02	2200
AR731B-W10y*B02	4000
AR732B-W10y*B02	2100
AR733B-W10y*B02	1800
AR731B-C10y*B03	5570
AR732B-C10y*B03	2780
AR733B-C10y*B03	2360
AR731B-W10y*B03	4830
AR732B-W10y*B03	2410
AR733B-W10y*B03	2040
AR731B-C12y*02	5940
AR732B-C12y*02	2970
AR733B-C12y*02	2510
AR731B-W12y*02	5200
AR732B-W12y*02	2600
AR733B-W12y*02	2200

Model Name 型號	Illumination @1m 1米照度
AR731B-C12y*03	6310
AR732B-C12y*03	3140
AR733B-C12y*03	2660
AR731B-W12y*03	5570
AR732B-W12y*03	2780
AR733B-W12y*03	2360
AR731B-C12y*B02	5940
AR732B-C12y*B02	2970
AR733B-C12y*B02	2510
AR731B-W12y*B02	5200
AR732B-W12y*B02	2600
AR733B-W12y*B02	2200
AR731B-C12y*B03	6310
AR732B-C12y*B03	3140
AR733B-C12y*B03	2660
AR731B-W12y*B03	5570
AR732B-W12y*B03	2780
AR733B-W12y*B03	2360
AR731B-C12y*02DVz*	5940
AR732B-C12y*02DVz*	2970
AR733B-C12y*02DVz*	2510
AR731B-W12y*02DVz*	5200
AR732B-W12y*02DVz*	2600
AR733B-W12y*02DVz*	2200
AR731B-C12y*03DVz*	6310
AR732B-C12y*03DVz*	3140
AR733B-C12y*03DVz*	2660
AR731B-W12y*03DVz*	5570
AR732B-W12y*03DVz*	2780
AR733B-W12y*03DVz*	2360

## AR111 1米照度参照表

Model Name 型號	Illumination @1m 1米照度
AR921-C20y*02	5700
AR922-C20y*02	3600
AR924-C20y*02	1360
AR921-W20y*02	4800
AR922-W20y*02	3000
AR924-W20y*02	1100

Model Name 型號	Illumination @1m 1米照度
AR921-C20y*03	6400
AR922-C20y*03	4100
AR924-C20y*03	1500
AR921-W20y03	5300
AR922-W20y03	3300
AR924-W20y03	1200
AR921-C20y*02DVZ*	5700
AR922-C20y*02DVZ*	3600
AR924-C20y*02DVZ*	1360
AR921-W20y*02DVZ*	4800
AR922-W20y*02DVZ*	3000
AR924-W20y*02DVZ*	1100



# MARS SERIES

AR111